

METAL SOLUTIONS

EOS M 300-4

- **Boost Your Productivity:** Versatile lasers, different automation options, and an adaptable design add up to game-changing productivity gains.
- **Consistent Quality:** Exceptional performance and stability to consistently deliver high-quality components at a reduced cost per part.
- **Designed to Grow:** The EOS M 300-4 platform offers the flexibility to easily ramp-up as your production demand increases.



EOS M 300-4

Reliable DMLS Quality to meet your production needs.

Designed for industrial applications, the EOS M 300 Series offers multiple configuration options combined with safety and security features enabling digital Additive Manufacturing. The platform offers the flexibility to choose the degree of automation that best suits your needs for an optimized workflow as well as the option to easily ramp-up as demand increases.

EXPOSURE MODULE

LASERS



4 precise lasers expose in a 300 x 300mm square with each laser covering the entire area.

SOFTWARE



EOS BUILD

EOS Build subscriptions offer enhanced EOSPRINT features for multiple users with flexible material management; Build+ adds more licenses, advanced materials, and training for up to 5 users.



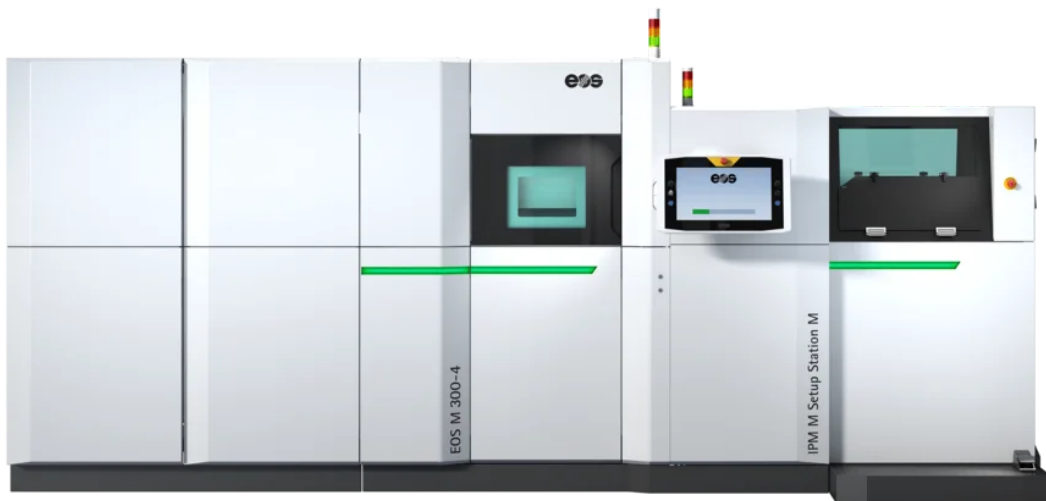
EOS SMART MONITORING

EOS Smart Monitoring utilizes Exposure OT for comprehensive build monitoring and pairs it with Smart Fusion to regulate heat within set parameters in collaboration with EOS Build/Build+.



EOS SYSTEM SUITE

EOS System Suite optimizes production by streamlining processes, integrating with MES and shop-floor IT systems, and generating detailed quality reports.



TECHNICAL DATA

BUILD VOLUME	300 x 300 x 435* mm (11.8 x 11.8 x 17.1 in)
LASER TYPE	Yb-fiber laser; 4 x 400 W
PRECISION OPTICS	4 F-theta-lens(es); 4 High-speed scanner(s)
SCAN SPEED	up to 7.0 m/s (23.0 ft/s)
FOCUS DIAMETER	approx. 100 µm (0.00394 in)
POWER SUPPLY	3 x 63 A
POWER CONSUMPTION	max. 19.6 kW / typical 16.0 kW
COMPRESSED AIR SUPPLY	7 Bar; 15 m³/h (102 psi; 530 ft³/h)

* M 290 Series: including build platform and application dependent. M 300 and M 400 Series: including build platform.

** For machine dimensions, please [contact us](#)

MATERIALS & PROCESSES

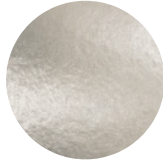
EOS has exceptional materials expertise and a comprehensive portfolio of highly developed materials for additive manufacturing. Our materials, systems and process parameters fit together optimally. With the right materials, you can realize the desired property profiles in the best possible way for your products

EOS M 300-4

EOS Aluminium AlSi10Mg



EOS CobaltChrome MP1



EOS MaragingSteel MS1



EOS NickelAlloy IN625



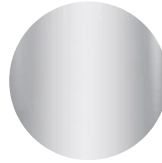
EOS NickelAlloy IN718



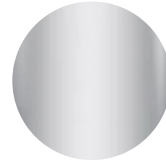
EOS NickelAlloy IN718 API



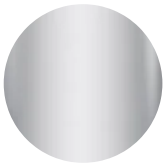
EOS StainlessSteel 17-4PH



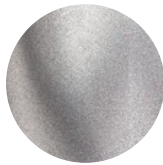
EOS StainlessSteel 316L-4404



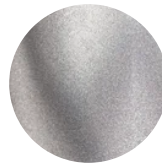
EOS StainlessSteel 316L-4441



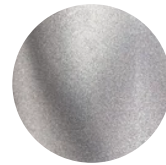
EOS Titanium Ti64



EOS Titanium Ti64 Grade 23



EOS Titanium Ti64 Grade 5



OPTIONAL ACCESSORIES



IPCM M Extra

Manual and flexible powder handling



IPM M Setup Station M

Comfortable gas-tight unpacking from two sides and under inert gas

HEADQUARTERS

EOS GmbH
Electro Optical Systems

Robert-Stirling-Ring 1
82152 Krailling / Munich
Germany

Tel.: +49 89 893 36-0
Email: info@eos.info
URL: www.eos.info

Status as of 28.10.2025. Subject to technical modifications. EOS is certified according to ISO 9001.

EOS®, Additive Minds®, Alumide®, AMQ®, CarbonMide®, DirectMetal®, DMLS®, EOSAME®, EOSINT®, EOSIZE®, EOSPACE®, EOSPRINT®, EOSTATE®, EOSTYLE®, FORMIGA®, LaserProFusion®, PA 2200®, PrimeCast® and PrimePart® are registered trademarks of EOS GmbH Electro Optical Systems in some countries. For more information visit www.eos.info/trademarks.